



Paintaphasia

Paintings by Peter Eccleshare

Elizabeth Fry Building, University of East Anglia. April – June 2007

In collaboration with the Sainsbury Centre for Visual Arts, UEA

Exploring the impact of stroke and aphasia



1. Striking Hope in Hope.

**New lived in Norfolk of back of summer
Not therapist in individual in Norfolk.**

Future – hope.

Winter in Norfolk countryside.

**Red (blood) Blue & Black – Sky & Mind
Green (life) brown & gold – Ground & body.**

Small cloud and reflection in hope.



**2. Striking Dawn??? 9-3 month
Norfolk Broads.
September to March**

**Sky:- Trouble, windy, foggy, mind, sky green, sickness.
Darkness to 'think' hope dawn and life in brain.**

**Water:- Broad, waves, gale, mindless. Reflection
of sickness.**

**Marsh Rushes:- birth life, March green and growth
in dawn – striking?**



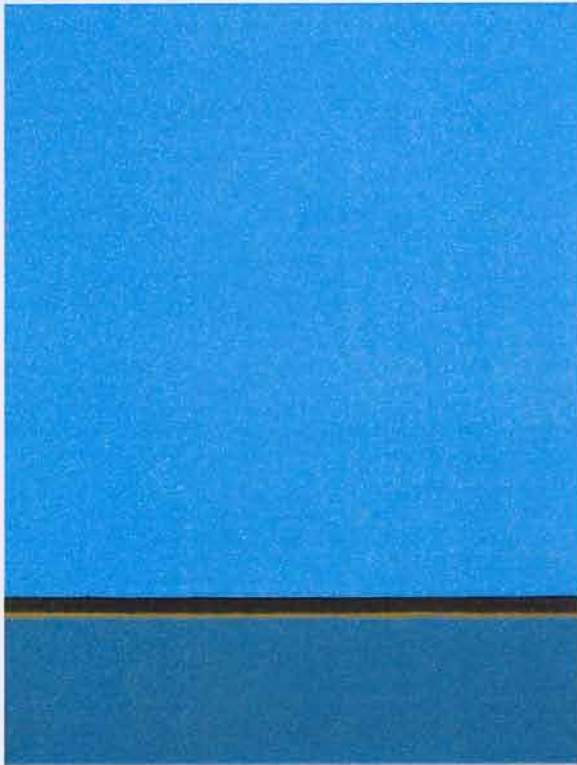
3. Retrogressive – Tree with/and stroke.

Behind the wood are livings and sunlight and happy.

**Fore tree has reversal of development – leaves falling – the
branches and twigs an bones and sharp and scratch.**

**Stroke decline and deterioration after progress life,
wounds, scars.**

Falling to compost.



**4. Stroke Intense – Summer
Norfolk Broads**

**Concentrate on focus on Broad sight but details are
go out.**

**Or sky, water and land but no – scape existence –
intense not beautiful. Dazzled.**

**Brain blind, confuse to sight and knowledge –
overpower, confusing, stupefy, bewilder.**



5. Swim up from stroke mire.

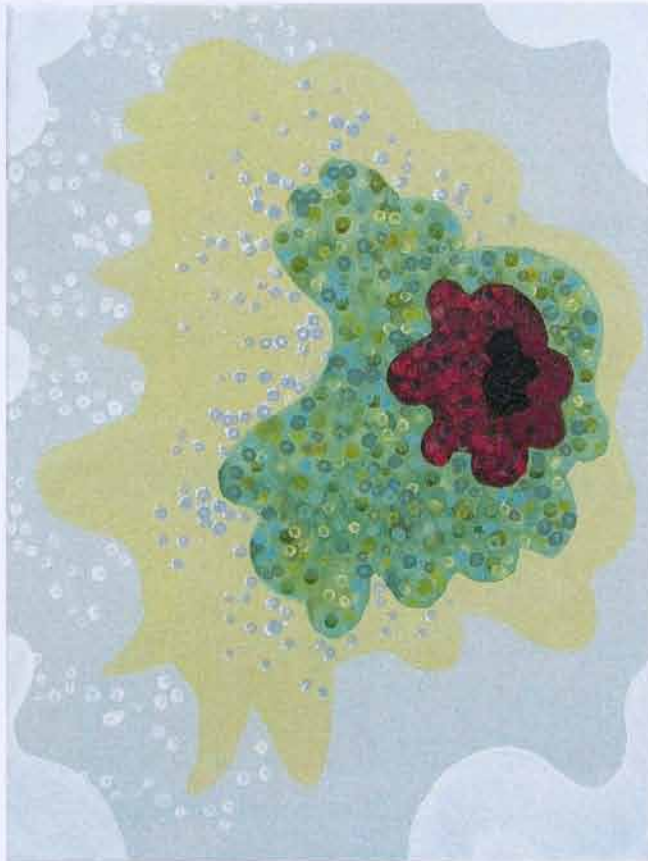
Difficult to swim up.

First: struggle from mire – brain stroke

**Second: Hands from knowledgement, lessons, individual
nurse for years but one in water you see the lotus.**

**Third: In daylight, illuminations for read, write, talk
and hearing.**

Escape from stroke.



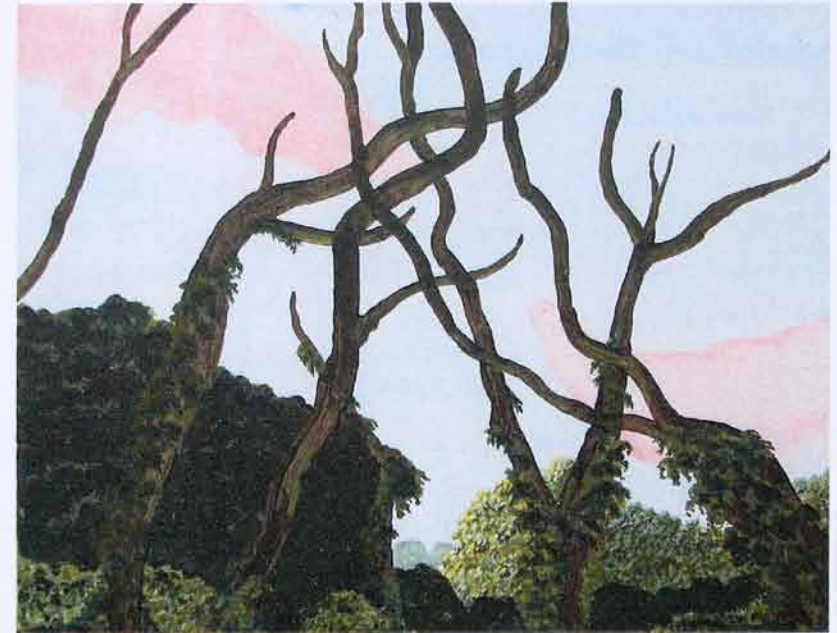
6. Stroke Brain of Ions pus.

Black blood in stroke charge. To pus greenish, yellowish liquid in brain.

Ions that has lost one or more stroke results.

But ions or gain one more.

Wounds bandgape, science, therapists – result restore.

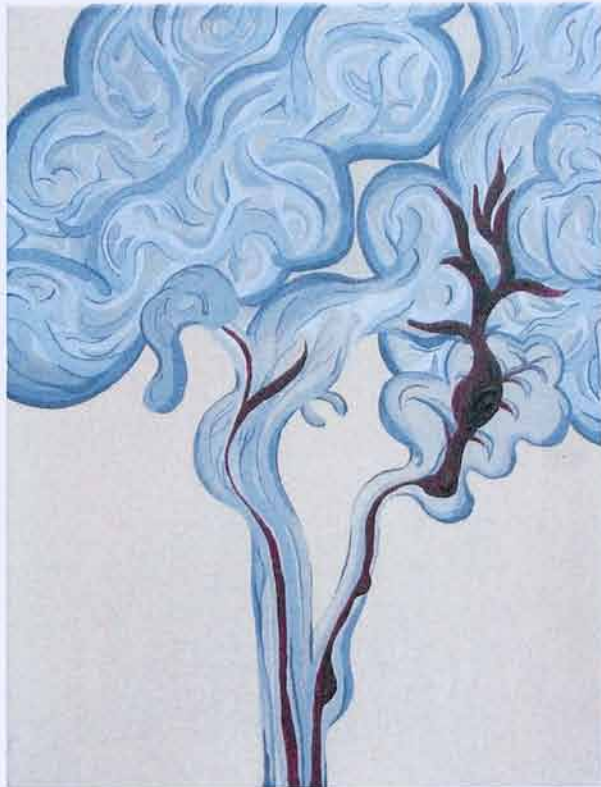


7. Morning Struggle to Rebuilt.

Pink in morning are dawn, grow sunlight, because evident or understood

Trees skeletons supporting the body and emaciated person in brain but struggling to rebuilt in the blue air from underbrush and ivy.

To horizon to sight of grow trees.

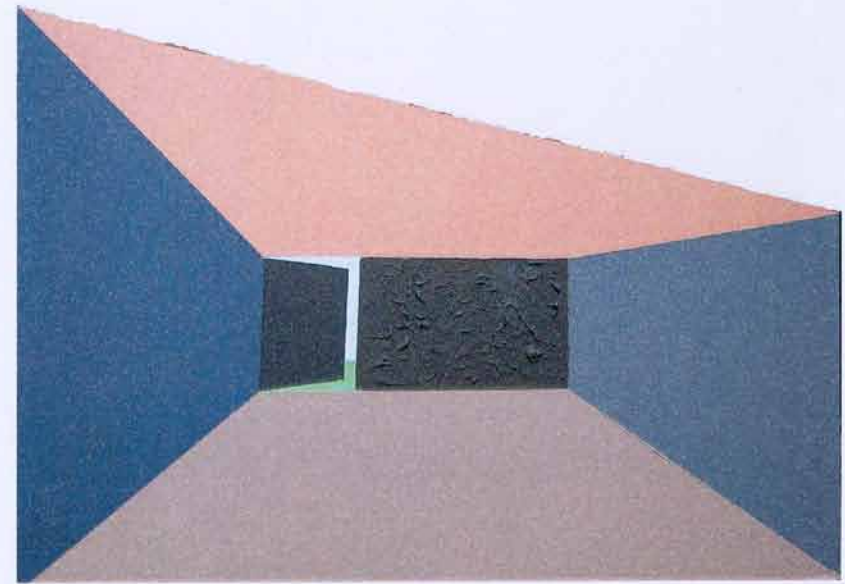


8. Me – Afternoon 30.4.03

**My stroke. Brain – left, is strong and health.
Right, stroke pulse break out war of blood.**

**Me, bodily not affect but leg slight painful. But
brain affect memory. Not knowledge forehead but
distant knowledge in brain and one hour carried out.**

**Read and write sentences c 40%
Talk and speech c 20%**



9. Monotony – Opening or Closing.

**Monotony – Room or cell of living dull, tedious, sameness,
life sentence or
NOT – life blood, life-force, active, growth, vital factor,
influence.**

Red blood in all walls, floor and ceiling.

BUT – outside every force of life.

BUT – the door is opening or closing?



10. **QUATREFOIL of
SCREENS PARTITIONS
ANAMNESIS* MORPHOLOGY****

*Recollection – patient's account of medical history.

**Study of forms.

seeing right to left

SCREEN ONE

Profound grey brain. Insight. Study of thought, deep, intense, knowledge, data processor, know facts and things basic for inference. Memory senses, procognition engrosses the mind. Information wiring to history circfluent.

Ageing with forget with dying brain, sludge at depreciation depth.

SCREEN TWO

Thoughts from grey brain with electrical. Thinking accuracy. Sparking of interest, discharge with explosive mixture. Witty excitement lively gem. Stir into activity. Firing bullets of imagination, images and concepts, creative into riddle plan. Some forget.

SCREEN THREE

Second plan thinking, but ideas of test analysis – preferable take priority to outside. thoughts yes or no this day. Grope and fumble, clumsily asphasia and forget, not memory and weak. Although not escape for barrier of stroke – bloody, boils, pus.

SCREEN FOUR

Aloft air, natural beatify outside. Delighting the senses. Some thinks are a system, formal consistency and correct logical reasoning; some are beautiful in world, or a thought is elegance, grace talent or – a thought forget or inexplicit or ingrowing.

